



Let **UK** Home

3 Bedrooms

Flat

Located in London

£3,200 Per Month



info@letukhome.co.uk

<https://www.letukhome.co.uk/>

01795 358 886



Whelan Road London

W3 8UD



Let UK Home are proud to present this comfortable and spacious 3-bedroom apartment in Dickinson Court, part of Acton Gardens, located in the W3 area, in the heart of South Acton, between Chiswick and Ealing, with a very convenient location.

This property comprises a large bright open plan kitchen and living room leading to a large private terrace, three double bedrooms(master with wardrobe and en-suite), a large family sized bathroom, a toilet room and ample storage.

The development includes a communal courtyard for residents to take a daily walk and relax, and also provides parking spaces and outdoor open-air activity space.

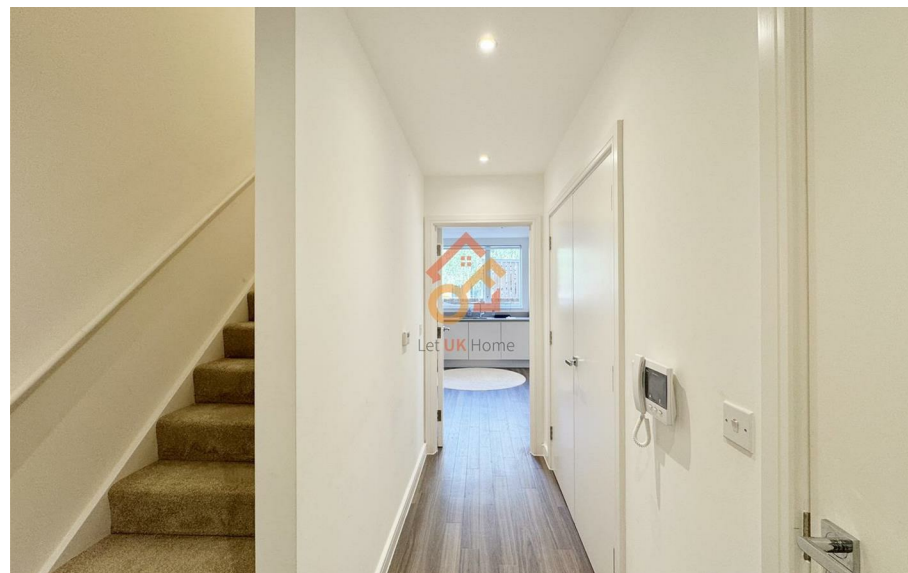
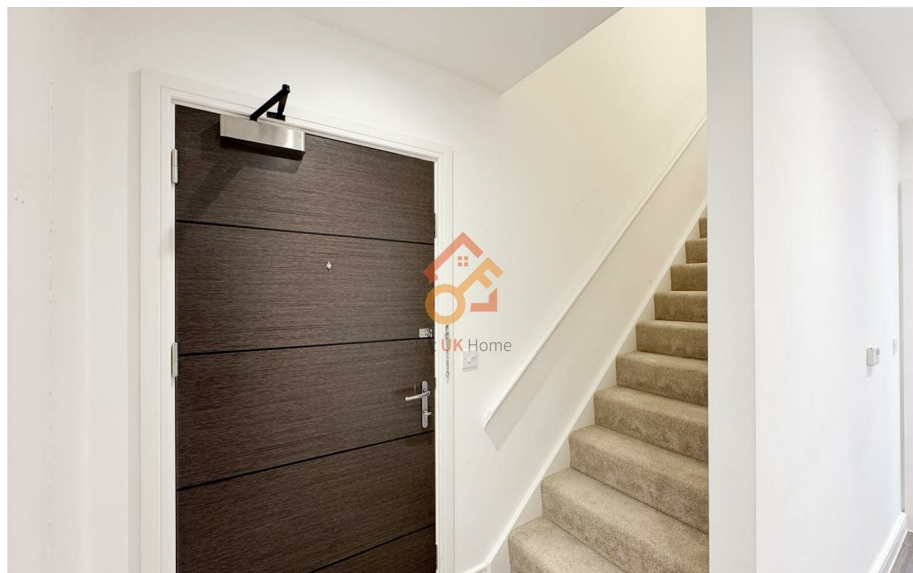
Local amenities at Acton High Street are nearby, as are the shopping and entertainment facilities of Churchfield Road, Chiswick High Road and Westfield, a shopping centre. Acton High Street is home to many large and small retail outlets, as well as many open spaces such as Gunnersbury Park and Ealing Common. Neighbouring Chiswick has a pavement café culture that is the envy of London, making it the perfect place to spend a leisurely weekend. For everyday needs, the central high street has a large supermarket, bank, local library, pharmacy, gym and public swimming pool.

There are three subway stations near the property, namely Acton Town (District & Piccadilly), Acton Main Line (Elizabeth) and South Acton (Overground). The property is within walking distance of Acton Town subway station. It is very convenient to get to the city center from Acton Gardens. From Acton Main Line, you can go directly to the city center, and from South Acton, you can go directly to Northeast London and Richmond.

Whelan Road London

£3,200 Per Month

- G+1 Floor
- Private Terrace
- Close to Tube
- Parking Space
- Communal Courtyard
- Close to Shopping Center





Let **UK** Home

3F 2 Eastbourne Terrace
Paddington
London
W2 6LG

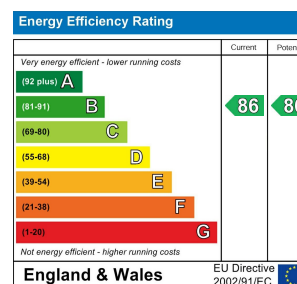
01795 358 886

info@letukhome.co.uk

Council Tax Band: E

Local Authority:

Agents Note: Whilst every care has been taken to prepare these particulars, they are for guidance purposes only. All measurements are approximate and are for general guidance purposes only and whilst every care has been taken to ensure their accuracy, they should not be relied upon and potential buyers/tenants are advised to recheck the measurements.



<https://www.letukhome.co.uk/>